



OFFER COMPARISON GUIDE

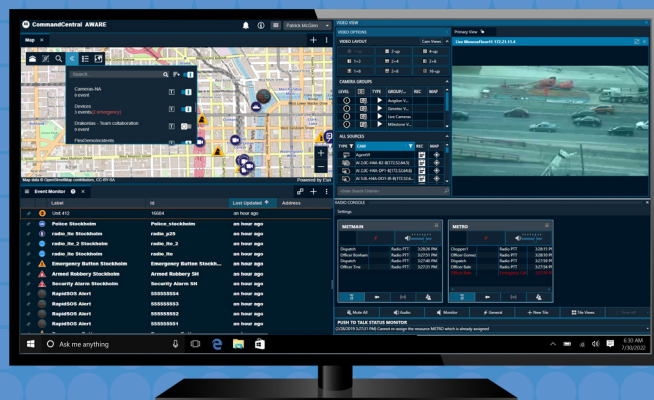
COMMANDCENTRAL AWARE

CommandCentral Aware has four subscription tiers including five offer packages to fit your agency's needs and budget. Our tiering structure allows you to grow your real-time intelligence capabilities in a way that meets your workflow needs.

Whether you're getting started building a real-time intelligence operation or growing your capabilities, we have a plan for you. Start by maximizing the investments of your agency's existing technologies with the CommandCentral Aware Starter offers. Scale situational awareness and augment workflows through the Standard to Premium tiers and comprehensively grow your agency's real-time intelligence capabilities.

The Starter offers enhance your operations while Standard expands upon the combined Starters to enable extensive real-time resource and event visibility. Plus allows you to consolidate and view disparate video management systems while Premium introduces native radio communication as well as federated records database searching capabilities.

Use the following matrix to directly compare the core capabilities of CommandCentral Aware to decide which might be best for your agency.



		PATROL	PSAP	REAL-TIME CRIME CENTER		
		STARTER	STARTER	STANDARD	PLUS	PREMIUM
Essentials	ESRI-Based Mapping w/Custom Layers	✓	✓	✓	✓	✓
	Integrated Building Floor Plans	✓	✓	✓	✓	✓
	Real-Time Traffic & Weather Radar	✓	✓	✓	✓	✓
	Configurable CAD-Style Event Monitor	✓	✓	✓	✓	✓
	Geographic Zones of Interest (Geofences)	✓	✓	✓	✓	✓
	Workflow Automation Rules Engine	✓	✓	✓	✓	✓
	Tactical Collaboration & Drawing Tools	✓	✓	✓	✓	✓
	Historical Incident Recreation & Replay	✓	✓	✓	✓	✓
	Documented 3rd Party Data Ingest API			✓	✓	✓
Resources	Radio Location, Detail, Status & Alerts	✓		✓	✓	✓
	Smartphone App Location, Detail & Status	✓		✓	✓	✓
	Body-Worn Camera Location, Detail & Livestream	✓		✓	✓	✓
	In-Car Video System Location, Detail & Livestream	✓		✓	✓	✓
	Drone Location, Detail & Livestream	✓		✓	✓	✓
	LPR Camera Location, Detail & Hot Hit Alerts	✓		✓	✓	✓
	Resource Affiliation & Unit Management	✓		✓	✓	✓
	Patrol Checkpoint Creation & Alerts	✓		✓	✓	✓
	CAD-Provided Unit Location, Detail & Status		✓	✓	✓	✓
	Community Camera Registry Map Layer			✓	✓	✓
	AVL-Equipped Vehicle Location & Detail			✓	✓	✓
Event Sources	9-1-1 Call Location & Details		✓	✓	✓	✓
	Panic Button & Tip Location & Details		✓	✓	✓	✓
	CAD Incident Location & Details		✓	✓	✓	✓
	Gunshot Detection Location & Details			✓	✓	✓
Fixed Video	VMS-Agnostic Video Streaming				✓	✓
	Custom Camera Grouping & Labeling				✓	✓
	Camera Mapping & Analytic Alerts				✓	✓
	Native Pan-Tilt-Zoom Camera Controls				✓	✓
	Video Clip & Snapshot Export Options				✓	✓
	Granular Viewing & Feature Permissions				✓	✓
Communications	Embedded Email Sharing				✓	✓
	Radio Console Communications					✓
Search & Query	Google Search on Text Highlight	✓	✓	✓	✓	✓
	LPR Records Database Search	✓		✓	✓	✓
	Federated Records Database Query					✓
Security	CJIS Security Policy Compliant	✓	✓	✓	✓	✓
	Annual SOC 1 & 2 Security Auditing	✓	✓	✓	✓	✓
	ISO 27001, 27017 & 27018 Certified	✓	✓	✓	✓	✓
	FedRAMP Certified Cloud (Optional)			✓		

*This list is not exhaustive. Check with your Motorola Solutions sales representative for a comprehensive list of features, supported integration types and specific compatible vendors.

For more information, contact us at: www.motorolasolutions.com/aware



Motorola Solutions, Inc. 500 West Monroe Street, Chicago, IL 60661 U.S.A. motorolasolutions.com

MOTOROLA, MOTO, MOTOROLA SOLUTIONS and the Stylized M Logo are trademarks or registered trademarks of Motorola Trademark Holdings, LLC and are used under license. All other trademarks are the property of their respective owners. © 2022 Motorola Solutions, Inc. All rights reserved. 09-2022 [MW02]